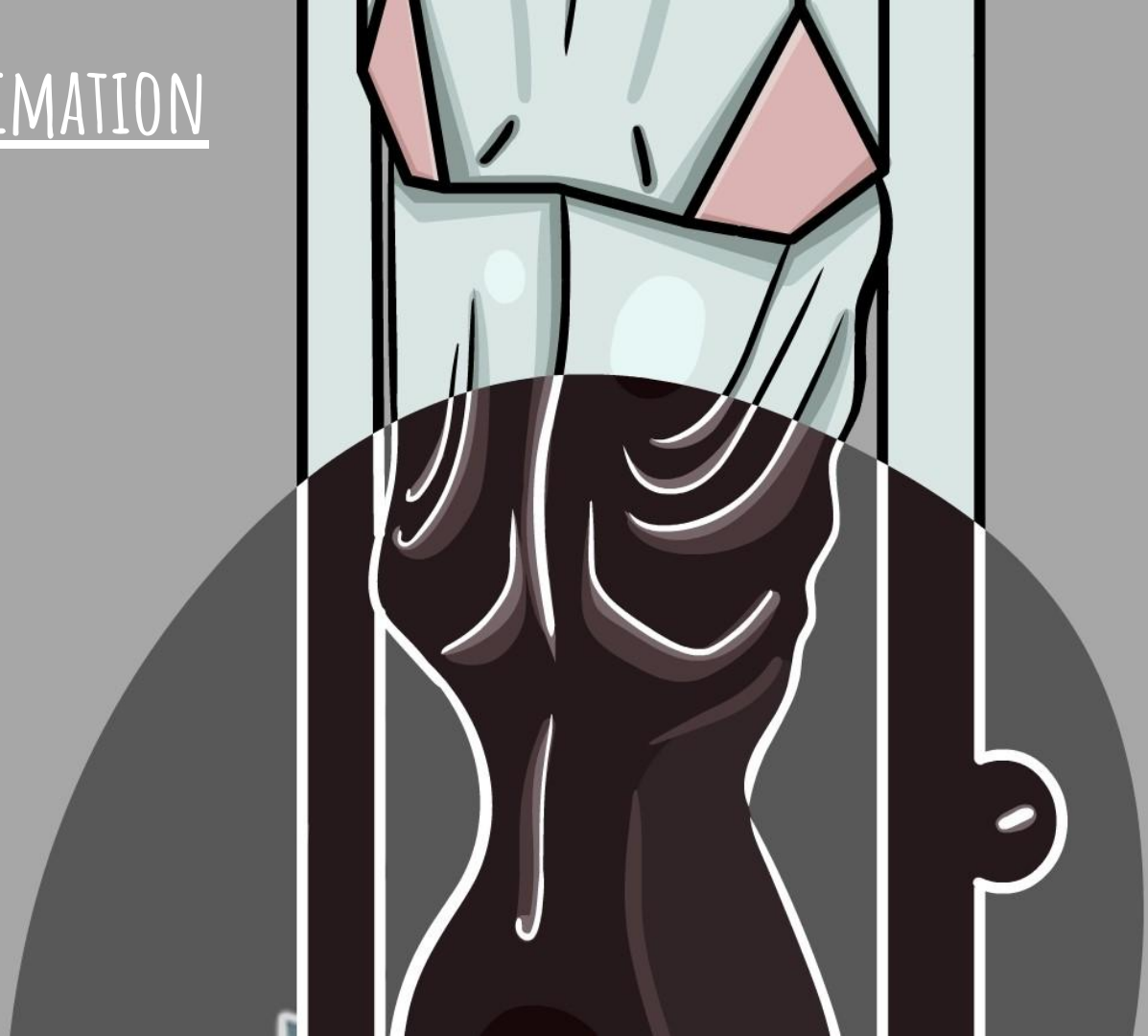


INTRODUCTION TO ANIMATION

LARA CHANNON

9TH DECEMBER FINAL SUBMISSION





POINT-OF-VIEW FILM LINK:

[HTTPS://WWW.YOUTUBE.COM/WATCH?V=IXOXC63YHb0](https://www.youtube.com/watch?v=ixoxC63YHb0)

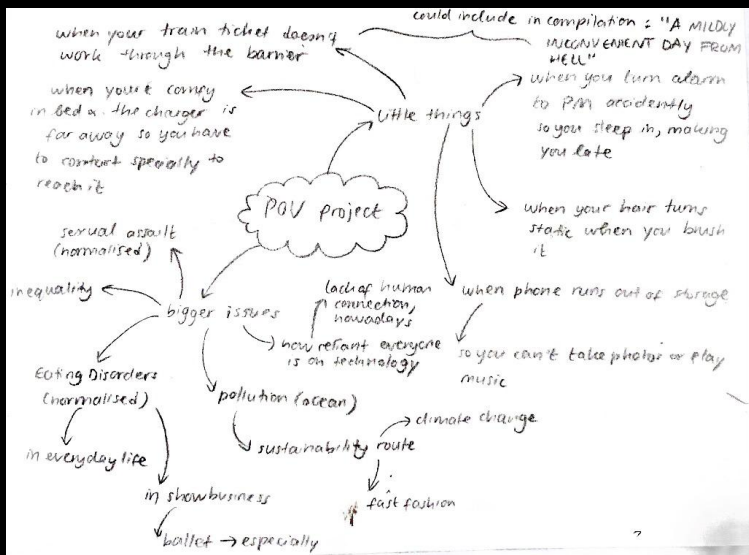
200 WORD ANALYSIS

"BEHIND THE CURTAIN" IS A FILM THAT REFLECTS ON THE NORMALISATION OF EATING DISORDERS IN THE ENTERTAINMENT INDUSTRY; SPECIFICALLY THE BALLET SECTOR. AS WOMEN, THROUGHOUT OUR LIVES, OUR BODIES ARE CONTINUOUSLY CRITIQUED BY THE MEDIA AS WELL AS THE PEOPLE SURROUNDING US, HENCE WHY THIS ISSUE IS SOMETHING I PARTICULARLY FEEL STRONGLY ABOUT. THE PLOT-LINE FOLLOWS MY CHARACTER "ANTOINETTE", OUTLINING THE VARIOUS HARDSHIPS SHE GOES THROUGH TO GAIN THE FORM EVERYONE DESIRES. THIS INCLUDES WEAKENED HAIR, ANXIETIES, LOSS OF FOCUS AND THE DECLINING HEALTH OF HER BODY AND MIND.

THROUGH CREATING THIS ANIMATION, I APPLIED A VARIETY OF THE SKILLS LEARNED IN BOTH UNITS, INCLUDING CHARACTER DESIGN, SOUND DESIGN, AND EXPERIMENTATION WITH COMPOSITION AND NARRATIVE THROUGH VARIOUS FORMS. THE PREVIOUS PROJECTS IN THIS UNIT REALLY HELPED ME TO FAMILIARISE MYSELF WITH THE PROGRAM, SPECIFICALLY THE "OBJECTS" ANIMATION. WHEN CREATING THE CHARACTERS, I TOOK INSPIRATION FROM THE ART STYLE USED IN SPONGEBOB AND TIM BURTON MOVIES, MIXING THICK LINE WORK WITH A MUTED COLOUR PALETTE. THROUGH EXPERIMENTING WITH DIFFERENT BLENDING MODES AND FOLEY, I WAS ABLE TO GET A LARGER RANGE OF EFFECTS WITHIN THE AUDIO AND VISUALS. OVERALL, I QUITE LIKE THE ART STYLE I DEVELOPED IN THIS FILM, HOWEVER, I THINK THE SOUND BECOMES QUITE CHOPPY AT SOME POINTS

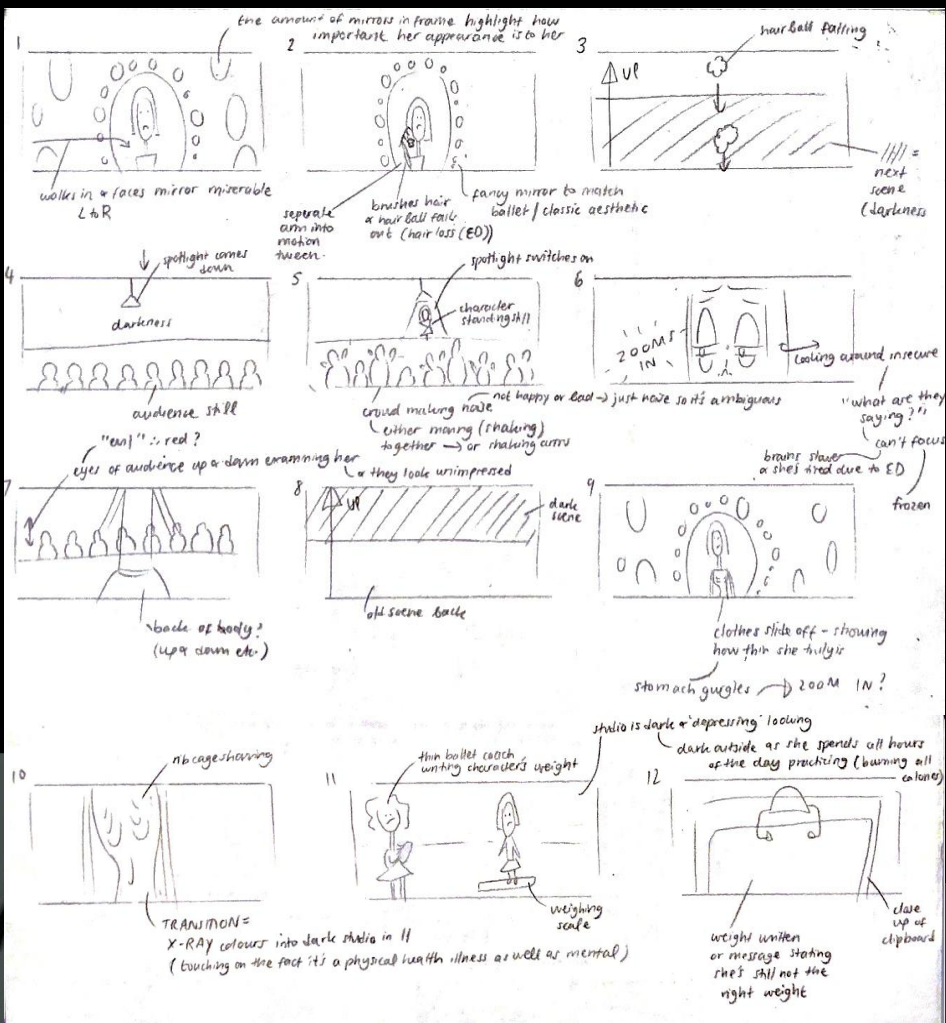
MYBLOG LINK:

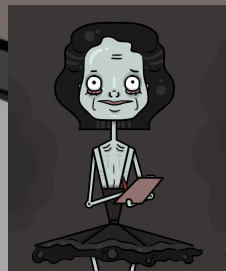
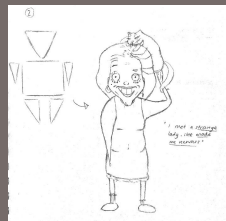
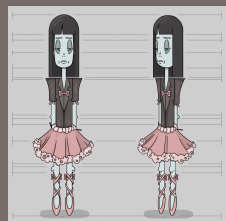
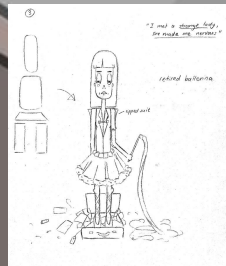
[HTTPS://LARACHANNON.MYBLOG.ARTS.AC.UK/2021/12/07/POV-PROJECT-BEHIND-THE-CURTAIN/](https://larachannon.myblog.arts.ac.uk/2021/12/07/pov-project-behind-the-curtain/)



INITIAL IDEAS

STORYBOARDING

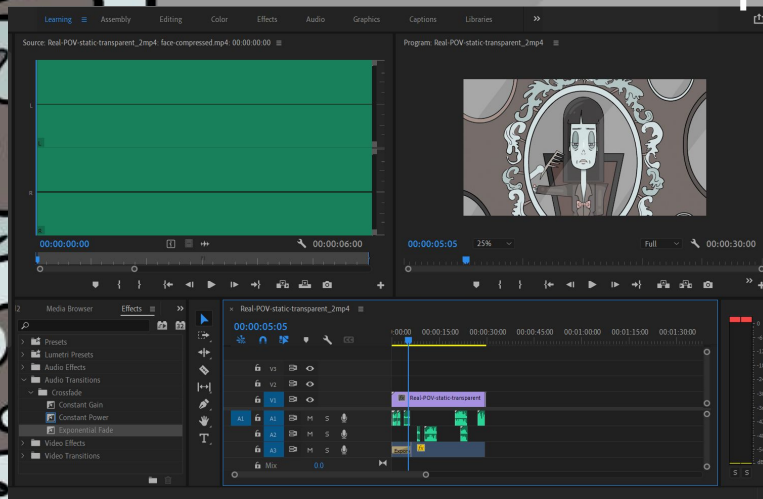
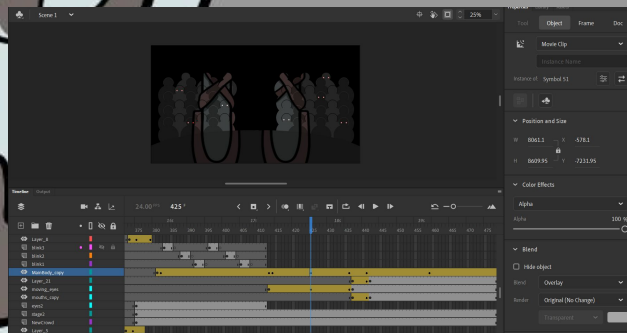




STYLE INSPIRATION



EXPERIMENTATION WITH BLENDING MODES & COLOUR EFFECTS E.G. OVERLAY, INVERT



FOLEY SOUNDS:

- PUSHING A CAN ON A HARD SURFACE
- BRUSHING THROUGH A WASHING-UP BRUSH
- DANGLING KEYS
- MICROWAVE TIMER
- CROWD IN RIOT
- & MORE FROM ELSEWHERE

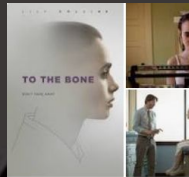
IN ORDER TO GET A MORE OMINOUS SOUND, I DISTORTED THEM ACCORDINGLY IN PREMIERE PRO



Breaking Pointe

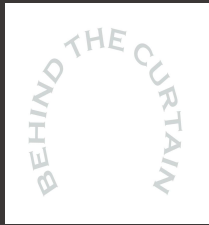


Flesh And Bone



To the Bone

BEHIND THE CURTAIN
BEHIND THE CURTAIN
BEHIND THE CURTAIN
BEHIND THE CURTAIN
BEHIND THE CURTAIN



OTHER FILM RESEARCH

FONT AND FORMAT EXPLORATION

TITLE BRAINSTORMING

